



**PROJECT**

---

**TYPE**

---

**NOTES**

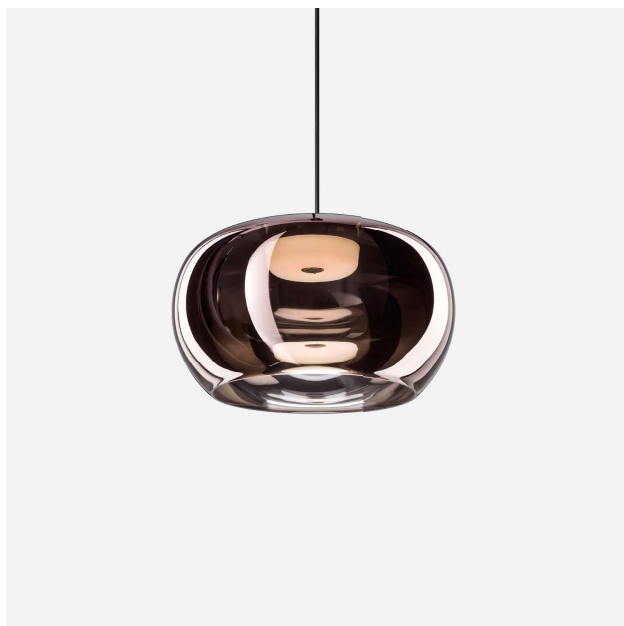
---

**QUANTITY**

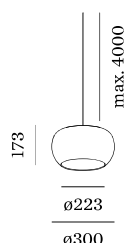
---

**DATE**

---



Ceiling suspended luminaire made from artisanal handblown glass in Copper Glass; inclusive adjustable cable suspension max. 4000mm in Signal Black; PCB 3-step binning; phase-cut dim; light colour 1800 - 2850 K colour warm dimming;  $\leq 3$  SDCM (initial MacAdam); CRI  $\geq 90$ ; 220 - 240 V; degree of protection IP20; Class 2; ceiling base not included; light source replaceable by Wever & Ducré or by a professional with explicit authorization;



**LUMINAIRE**

Ceiling  
Suspended  
Copper Glass  
No matching RAL  
IP20  
Interior  
445 lm

**LED Module**

colour warm dimming  
1800 - 2850 K  
CRI  $\geq 90$   
L80 / 50000 h  
 $\leq 3$  SDCM (initial MacAdam)  
890 lm  
74 lm/W<sup>a</sup>

**Optical**

CIE flux code: 66 87 97 91 100

**Electrical**

phase-cut dim  
220 - 240 V  
system 12.0 W  
Class II  
Standard

**Physical**

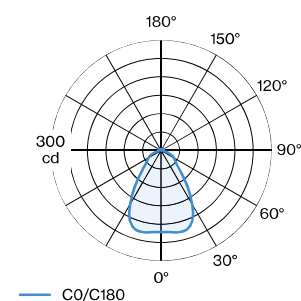
diameter 300 mm  
height 173 mm  
2.7 kg  
cable length 4000 mm

**datasheet.quicksum.material**

Glass

<sup>a</sup> Without electrical and optical losses

**LIGHT DISTRIBUTION**




**Maintenance Factor**

Operating Time [h]	10.000	20.000	30.000	40.000	50.000
LLMF	0.97	0.93	0.89	0.85	0.81
LSF	1	1	1	1	1

$$MF = LMF \times RSMF \times LLMF \times LSF$$

MF Maintenance Factor

LMF<sup>a</sup> Luminaire Maintenance Factor

RSMF<sup>a</sup> Room Surface Maintenance Factor

LLMF Lamp Lumens Maintenance Factor

LSF Lamp Survival Factor

<sup>a</sup>According to "CIE 97, Maintenance of indoor electric lighting systems", 2005, ISBN 3-900-734-34-8. The values must be determined by the planner.

**MOUNTING ACCESSORIES**
**Cable Wall-Ceiling Bracket**

Type	Colour	Voltage	Ø-H (MM)	Item number
	White		16-30	90019197
	Black		16-30	90019198

**Hook long**

Type	Colour	Voltage	Ø-H (MM)	Item number
for cable 4.25-5.5mm diameter	White		15-49	90052083
for cable 4.25-5.5mm diameter	Black		15-49	90052084

**Invisible ceiling base**

Type	Colour	Voltage	L-W (MM)	Item number
	Black		140-66	90015195
	White		140-66	90015196

**Linear multi base 1.3**

Type	Colour	Voltage	L-W-H (MM)	Item number
3 luminaires	Black		600-34-52	914130B0
3 luminaires	White		600-34-52	914130W0

**Linear multi base 1.6**

Type	Colour	Voltage	L-W-H (MM)	Item number
6 luminaires	Black		1200-34-52	914131B0
6 luminaires	White		1200-34-52	914131W0

**Linear multi base 1.9**

Type	Colour	Voltage	L-W-H (MM)	Item number
9 luminaires	Black		1800-34-52	914132B0
9 luminaires	White		1800-34-52	914132W0

**Multi chandelier**

Type	Colour	Voltage	Ø-H (MM)	Item number
1-9 luminaires	Black		380-44	914120BBO
1-9 luminaires	Black + Aluminium		380-44	914120BLO
1-9 luminaires	Black + Champagne		380-44	914120BMO
1-9 luminaires	Black + Bronze		380-44	914120BQO
1-9 luminaires	White		380-44	914120WWO

[236388P9] The technical data represent rated values for an ambient temperature of 25°C. The data values for the luminous flux are initially subject to a tolerance of +/- 10%, those for the electrical connected load are initially subject to a tolerance of +/- 10%, and those for the colour temperature are initially subject to a tolerance of +/- 150 K. No liability is assumed for typographical or printing errors. The general terms and conditions of Wever & Ducré BV apply.


**Multi chandelier HV**

Type	Colour	Voltage	Ø·H (MM)	Item number
1-9 luminaires   no slots   always use with hooks	Black		380-44	914160BB0
1-9 luminaires   no slots   always use with hooks	Black + Aluminium		380-44	914160BL0
1-9 luminaires   no slots   always use with hooks	Black + Champagne		380-44	914160BM0
1-9 luminaires   no slots   always use with hooks	Black + Bronze		380-44	914160BQ0
1-9 luminaires   no slots   always use with hooks	White		380-44	914160VW0

**Multiple base round**

Type	Colour	Voltage	Ø·H (MM)	Item number
up to max. 4 luminaires	White		123-44	90052005
up to max. 4 luminaires	Black		123-44	90052006
up to max. 8 luminaires	White		123-44	90052031
up to max. 8 luminaires	Black		123-44	90052032

**Semi recessed single base**

Type	Colour	Voltage	Ø·H (MM)	Item number
	Black		84-72	914150B0
	Aluminium		84-72	914150L0
	Champagne		84-72	914150M0
	Bronze		84-72	914150Q0
	White		84-72	914150W0

**Single base round**

Type	Colour	Voltage	Ø·H (MM)	Item number
excl. driver	Black		83-39	914110B0
excl. driver	Gold		83-39	914110G0
excl. driver	Aluminium		83-39	914110L0
excl. driver	Champagne		83-39	914110M0
excl. driver	Bronze		83-39	914110Q0
excl. driver	White		83-39	914110W0

**Wall Base**

Type	Colour	Voltage	Ø·H (MM)	Item number
for 1 luminaire	White		82-32	90019195
for 1 luminaire	Black		82-32	90019196

**TRACK ACCESSORIES**
**Track Adapter 2.0**

Type	Colour	Voltage	L·W·H (MM)	Item number
1-phase track	White		80-24-26	90014277
1-phase track	Black		80-24-26	90014278

**Track Adapter HV**

Type	Colour	Voltage	L·W·H (MM)	Item number
3-phase track	White		70-31-50	90014279
3-phase track	Black		70-31-50	90014280